

CAPSBUURY

Piccolo



Piccolo

Piccolo fuses simplified lines and utility, small in size to cater to the needs of our modern lives, elegant and refined in styling.

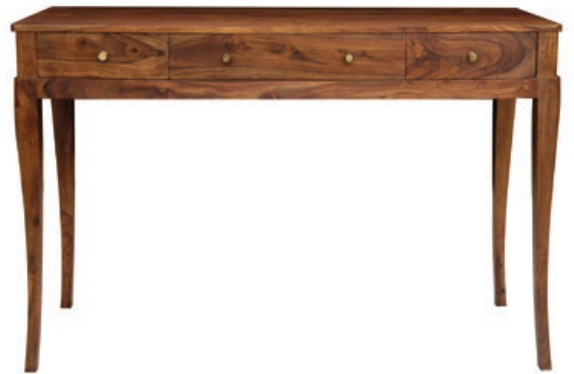
Living - Tables



Piccolo Coffee Table
H 41.5 W 1200 D 600



Piccolo Side Table
H 450 W 400 D 660



Piccolo Console Table
H 780 W 1160 D 450

Powder Table and Stool



Piccolo Powder Table
H 875 W 575 D 475



Piccolo Powder Stool
H 440 W 400 D 380

Chest and sideboards



Piccolo 3 Drawer Chest
H 85 W 80 D 45



Piccolo Small Sideboard
H 850 W 840 D 450



Piccolo 2 Door/3Drawer Sideboard
H 820 W 1600 D 450

Piccolo

Natural Characteristics of Acacia

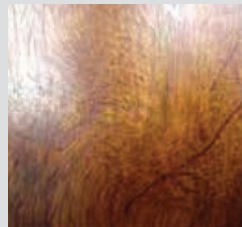
- The Acacia tree is a hardwood with a beautiful irregular grain structure which is both distinctive and charismatic. It is native to the northern part of the Indian sub-continent. A flowering tree, it is a deciduous tree locally known as kikar.
- All Piccolo pieces are hand -finished and consequently some minor imperfections may occur which is common in hand-finished furniture.
- This timber has a mix of white and dark red grain running through the planks and forms an irregular patterned look. To obtain a consistent, even tone, we apply an even stain and mat lacquer finish to every piece.



scratches/dents on the surface of tops and aprons are synonymous with solid woods
Small appearance of



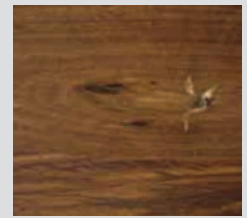
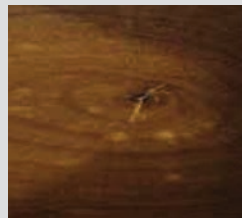
What appears to be an irregularity is a natural formation in the grain of the timber



Thin white/black lines that appear to be crack may in fact be mineral deposits

Care and Maintenance

- Remove liquid spills promptly
- Do not place very hot or very cold items on surface unless adequately thick table mats are used to prevent such items from coming into contact with the surface
- Keep away from direct sunlight and avoid above average room temperatures or extreme changes in temperature
- Do not place solid timber pieces in a conservatory or a room with glass roofing
- Central/under-floor heating and air-conditioning dry out the atmosphere. Should any wood movement start to show, a humidifier may be necessary
- A damp lint-free cloth can be used to clean your piece.



Calcium & Mineral Deposits:

Certain growing regions in India have a high concentration of calcium, sulphur, or other trace minerals in the soil or in the water table. These minerals are drawn up through the roots and deposited into the pore structure and heart of the tree. When the lumber is cut, the mineral deposits can show up as chalky white dots in the pores of the board.

WWW.CAPSBURY.COM

CAPSBURY LIMITED

FURNITURE DESIGN & MANUFACTURING SPECIALISTS

SALES : 11 PHOENIX HOUSE, ROSSLYN CRESCENT, HARROW, MIDDLESEX HA1 2SP, U.K